

WOODWORKING

Catalogue



Product	Page
ROUTERS	3
NESTING CUTTERS	9
JOINTING CUTTERS	14
EDGE CUTTERS	19
HOGGERS	30
HINGE BITS	32
SIZING SAW BLADES	34
SCORING SAW BLADES	37

MACH 1 (Z1+1)

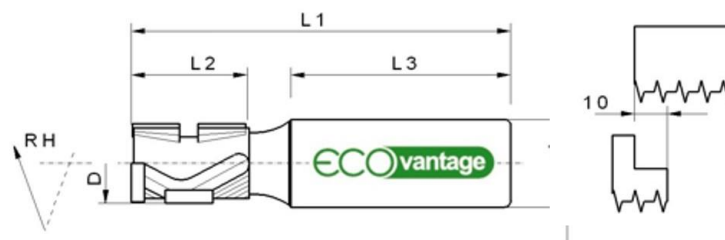


TECHNICAL FEATURES:

- Feed speed: up to 12 mt/min
- Shear angle: 12° for Ø up to 12,7 mm
18° for Ø 14-20 mm
- 1+1 PCD cutting edges
- Super strenght steel body
- Economy and Performance
- Resharpenable router (max 4 times)

APPLICATION:

- For CNC routers
- For jointing, rabbeting, grooving and copying:
 - Particleboards
 - MDF boards
 - Laminates
 - HPL and veneered panels



D	L2	d	L3	L1	Z	Code (LH)	Code (RH)
10	22	12	40	75	1+1		DP1M2 22D
10	25,4	12	40	75	1+1		DP1M2 23D
12	25,4	12	40	75	1+1		DP1M2 01D
12	25,4	25	55	90	1+1		DP1M2 02D
12	28	12	40	75	1+1		DP1M2 20D
12,7	25,4	12,7	35	70	1+1	DP1H2 01S	DP1H2 01D
12,7	35	12,7	35	79	1+1		DP1H002D
12,7	43	12,7	44,45	101,6	1+1		DP1H2 04D
14	25,4	16	40	75	1+1		DP1M3 26D
16	25,4	16	40	75	1+1		DP1M3 01D
16	35	16	40	85	1+1		DP1M3 03D
18	25,4	20	50	85	1+1	DP1M3 07S	DP1M3 07D
18	28	20	50	90	1+1		DP1M3 24D
18	35	20	50	95	1+1		DP1M3 11D
18	43	20	50	105	1+1	DP1M3 14S	DP1M3 14D
19,05	43	19,05	50	101,6	1+1		DP1H3 08D
19,05	53	19,05	50	114,3	1+1		DP1H3 09D
20	25,4	20	50	85	1+1		DP1M3 27D
20	51	20	55	120	1+1	DP1M3 16S	DP1M3 16D

MACH 1 EVO (Z2+1)

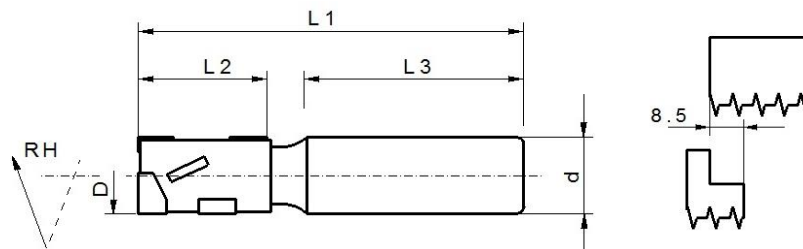


TECHNICAL FEATURES:

- Feed speed: up to 20 mt/min
- Shear angle: 18° for Ø up to 12,7 mm
25° for Ø 16 mm
30° for Ø 18-20 mm
- Innovative Z2+1 design on 3 flutes
- 2 PCD cutting edges
- P-Series protective coating
- Up to 60% longer tool-life

APPLICATION:

- For CNC routers
- For sizing and dividing:
 - Particleboards
 - MDF boards
 - Laminates
 - HPL and veneered panels
 - Solid hard woods



D	L2	d	L3	L1	Z	Code (RH)
12	25,4	12	40	75	2+1 (5)	DP1E005D
12	25,4	25	55	90	2+1 (5)	DP1E007D
12,7	25,4	12,7	40	72	2+1 (5)	DP1EH01D
12,7	35	12,7	40	82	2+1 (6)	DP1EH02D
16	25,4	16	45	80	2+1 (5)	DP1E00AD
16	35	16	45	90	2+1 (7)	DP1E00BD
18	25,4	20	55	90	2+1 (6)	DP1E00ED
18	35	20	55	100	2+1 (7)	DP1E00FD
18	43	20	55	110	2+1 (8)	DP1E00GD
20	51	20	55	115	2+1 (9)	DP1E00KD

MACH 2 (Z2+2)

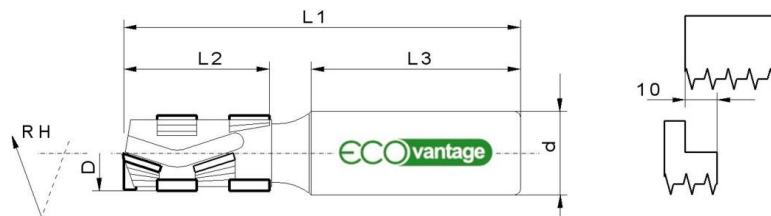


TECHNICAL FEATURES:

- Feed speed: up to 20 mt/min
- Shear angle: 18°
- 2+2 PCD cutting edges
- Super strenght steel body
- Economy and Performance
- Resharpenable router (max 4 times)

APPLICATION:

- For CNC routers
- For sizing and dividing:
 - Particleboards
 - MDF boards
 - Laminates
 - HPL and veneered panels
 - Solid hard woods



D	L2	d	L3	L1	Z	Code (LH)	Code (RH)
18	25,4	20	50	85	2+2		DP2M3 03D
18	25,4	25	55	90	2+2		DP2M3 04D
18	35	20	50	95	2+2		DP2M3 07D
18	35	25	55	100	2+2	DP2M3 08S	DP2M3 08D
18	43	20	50	105	2+2		DP2M3 10D
18	43	25	55	110	2+2	DP2M3 11S	DP2M3 11D
19,05	25,4	19,05	50	85,73	2+2		DP2H3 02D
19,05	35	19,05	50	95,25	2+2		DP2H3 03D
20	25,4	20	50	85	2+2		DP2M3 14D
20	25,4	25	55	90	2+2	DP2M3 15S	DP2M3 15D
20	28	20	50	90	2+2		DP2M3 16D
20	35	20	50	95	2+2		DP2M3 18D
20	35	25	55	100	2+2	DP2M3 19S	DP2M3 19D

MACH 3 EVO (Z3 - negative shear angle)

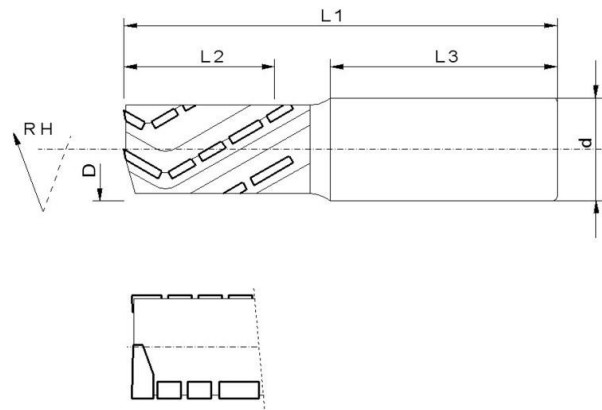


TECHNICAL FEATURES:

- Feed speed: up to 30 mt/min
- Shear angle: 30°
- 3 PCD cutting edges
- P-Series protective coating
- Up to 60% longer tool-life
- Prevailing negative flute
- Super strength steel body
- Resharpenable router (max 8 times)

APPLICATION:

- For CNC routers
- For sizing and dividing:
 - Particleboards
 - MDF boards
 - Laminates
 - HPL and veneered panels
 - Solid hard woods



D	L2	d	L3	L1	Z	Code (LH)	Code (RH)
20	22	20	55	90	3 (9)		DP3F003D
20	28	20	55	100	3 (10)		DP3F005D
20	38	20	55	105	3 (12)		DP3F007D
20	48	20	55	115	3 (15)		DP3F009D
25	22	25	55	90	3 (9)	DP3F00CS	DP3F00CD
25	28	25	55	100	3 (10)	DP3F00ES	DP3F00ED
25	38	25	55	105	3 (12)	DP3F00GS	DP3F00GD
25	48	25	55	115	3 (15)	DP3F00IS	DP3F00ID

MACH 3 EVO (Z3 - positive shear angle)

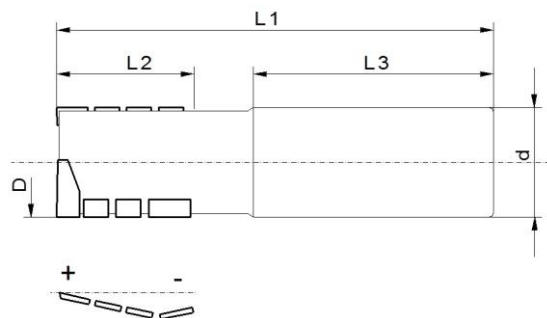


TECHNICAL FEATURES:

- Feed speed: up to 30 mt/min
- Shear angle: 30°
- 3 PCD cutting edges
- P-Series protective coating
- Up to 60% longer tool-life
- Prevailing positive flute
- Super strenght steel body
- Resharpenable router (max 8 times)

APPLICATION:

- For CNC routers
- For sizing and dividing:
 - Particleboards
 - MDF boards
 - Laminates
 - HPL and veneered panels
 - Solid hard woods



D	L2	d	L3	L1	Z	Code (LH)	Code (RH)
20	22	25	55	86	3 (9)		DP3F201D
20	28	25	55	92	3 (10)		DP3F202D
20	38	25	55	102	3 (12)		DP3F203D
20	48	25	55	112	3 (15)		DP3F204D
25	22	25	55	86	3 (9)	DP3F205S	DP3F205D
25	28	25	55	92	3 (10)	DP3F206S	DP3F206D
25	38	25	55	102	3 (12)	DP3F207S	DP3F207D
25	48	25	55	112	3 (15)	DP3F208S	DP3F208D

MACH 3.2 (Z3)

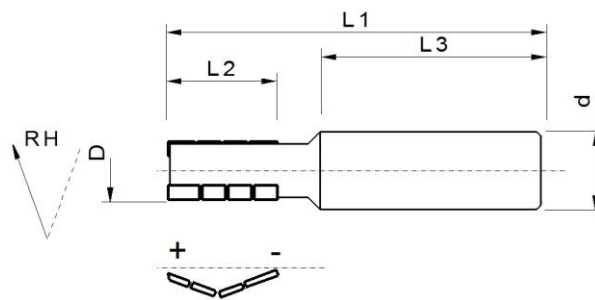


TECHNICAL FEATURES:

- Feed speed: up to 40 mt/min
- Shear angle: 20°
- 3 DP cutting edges
- Solid Carbide body
- P-Series protective coating
- Up to 60% longer tool-life
- Resharpenable router (max 4 times)

APPLICATION:

- For CNC routers
- For fast sizing and dividing:
 - Particleboards
 - MDF boards
 - Laminates
 - HPL and veneered panels
 - Solid hard woods



D	L2	d	L3	L1	Z	Code (RH)
12	22	16	45	76	3	DP3F301D
12	22	25	55	86	3	DP3F302D
12	28	16	45	82	3	DP3F303D
12	28	25	55	92	3	DP3F304D
14	35	16	45	92	3	DP3F309D
14	35	25	55	102	3	DP3F30AD
16	45	16	45	100	3	DP3F30FD
16	45	25	55	110	3	DP3F30GD

MACH 2 (Z2+2) Cylindrical shank

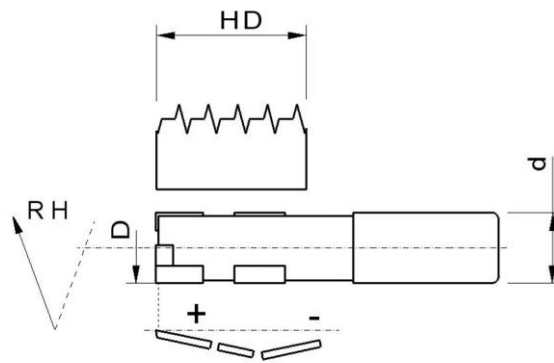


TECHNICAL FEATURES:

- Feed speed: up to 15 mt/min
- Shear angle: 14° for Ø 12 mm and 1/2"
16° for Ø up to 16 mm and 3/4"
- 2+2 PCD cutting edges
- P-Series protective coating
- Up to 60% longer tool-life
- Super strength steel body
- Resharpenable cutter (max 4 times)

APPLICATION:

- For CNC routers
- For nesting:
 - Particleboards
 - Laminates
 - HPL and veneered panels
 - Plyboards



HD	D	d	Z	Code (RH)
15 - 16 - 18	16	16	2+2	AES02P
15 - 16 - 18	16	25	2+2	AES0011P
19 - 20 - 22	16	16	2+2	AES04P
19 - 20 - 22	16	25	2+2	AES0012P
25	16	16	2+2	AES0BP
25	16	25	2+2	AES0013P

MACH 2 (Z2+2) Conical shank for Aerotech System

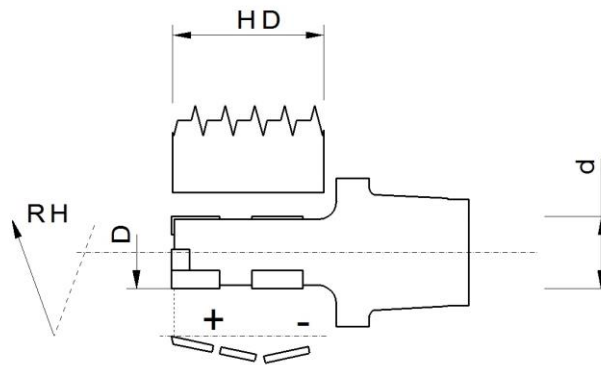


TECHNICAL FEATURES:

- Feed speed: up to 15 mt/min
- Shear angle: 14° for Ø 12 mm and 1/2"
16° for Ø up to 16 mm and 3/4"
- 2+2 PCD cutting edges
- P-Series protective coating
- Up to 60% longer tool-life
- 2 conical shank types:
 - HSK20E for Aerotech System E
 - HSK20C for Aerotech System
- High precision and no vibrations
- Resharpenable cutter (max 4 times)

APPLICATION:

- For CNC routers
- For nesting:
 - Particleboards
 - Laminates
 - HPL and veneered panels
 - Plyboards



HD	D	Z	Code (HSK20E)	Code (HSK20C)
15 - 16	12	2+2	AES1021D	AES13P
15 - 16	16	2+2	AES1011D	AES14P
18	12	2+2	AES1022D	AES15P
18	16	2+2	AES1012D	AES16P
19 - 20	12	2+2	AES1023D	AES16P
19 - 20	16	2+2	AES1013D	AES1FP
20 - 22	12	2+2	AES1024D	AES1GP
20 - 22	16	2+2	AES1014D	AES1HP
25	12	2+2	AES1025D	AES1MP
25	16	2+2	AES1015D	AES1LP

MACH 3 EVO (Z3) Cylindrical shank

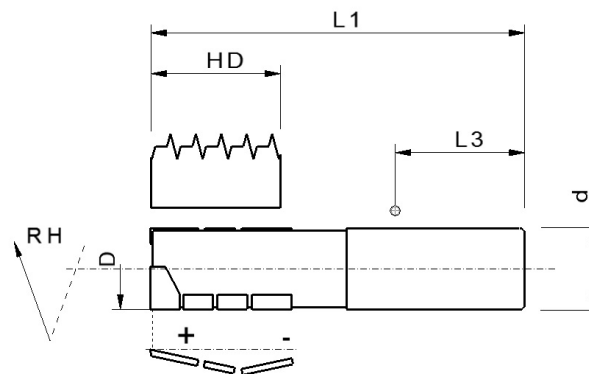


TECHNICAL FEATURES:

- Feed speed: up to 25 mt/min
- Shear angle: 25°
- 3 PCD cutting edges
- P-Series protective coating
- Up to 60% longer tool-life
- Super strength steel body
- Resharpenable cutter (max 4 times)

APPLICATION:

- For CNC routers
- For nesting:
 - Particleboards
 - Laminates
 - HPL and veneered panels
 - Plyboards



HD	D	d	L3	L1	Z	Code (RH)
15 - 16	16	16	45	70	3	AEH301D
18 - 19 - 20	16	16	45	73	3	AEH302D
22	16	16	45	75	3	AEH303D
25	16	16	45	80	3	AEH304D

MACH 3 EVO (Z3) Conical shank for Aerotech System

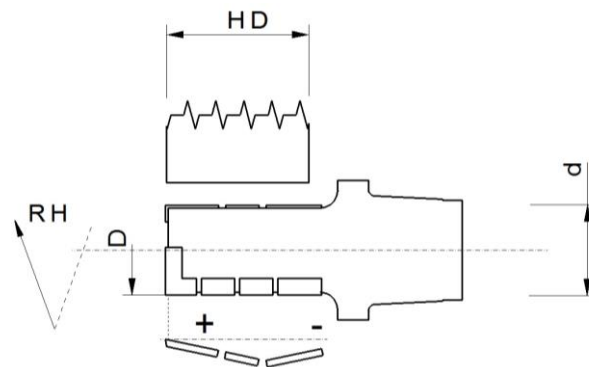


TECHNICAL FEATURES:

- Feed speed: up to 25 mt/min
- Shear angle: 25°
- 3 PCD cutting edges
- P-Series protective coating
- Up to 60% longer tool-life
- 2 conical shank types:
 - HSK20E for Aerotech System E
 - HSK20C for Aerotech System
- High precision and no vibrations
- Resharpenable cutter (max 4 times)

APPLICATION:

- For CNC routers
- For nesting:
 - Particleboards
 - Laminates
 - HPL and veneered panels
 - Plyboards



HD	D	Z	Code (HSK20E)	Code (HSK20C)
15 - 16	12	3	AES2121D	
18	12	3	AES2122D	
19 - 20	12	3	AES2123D	
22	12	3	AES2124D	
25	12	3	AES2125D	
15 - 16	16	3	AES2111D	AES2101D
18	16	3	AES2112D	AES2102D
19 - 20	16	3	AES2113D	AES2103D
22	16	3	AES2114D	AES2104D
25	16	3	AES2115D	AES2105D

MACH 3.2 (Z3) Cylindrical shank

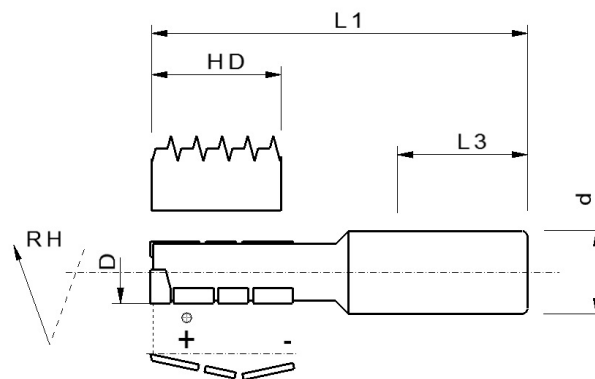


TECHNICAL FEATURES:

- Feed speed: up to 30 mt/min
- Shear angle: 20°
- 3 DP cutting edges
- Solid Carbide body
- P-Series protective coating
- Up to 60% longer tool-life
- Resharpenable cutter (max 4 times)

APPLICATION:

- For CNC routers
- For fast nesting:
 - Particleboards
 - Laminates
 - HPL and veneered panels
 - Plyboards



HD	D	d	L3	L1	Z	Code (RH)
15 - 16	12	12	40	70	3	AEH501D
15 - 16	12	16	45	72	3	AEH502D
18 - 19 - 20	12	12	40	75	3	AEH503D
18 - 19 - 20	12	16	45	76	3	AEH504D
22	12	12	40	77	3	AEH505D
22	12	16	45	78	3	AEH506D
25	12	12	40	80	3	AEH507D
25	12	16	45	82	3	AEH508D

DMA - Hydrofix Sky (Z4-Z6-Z8-Z10)

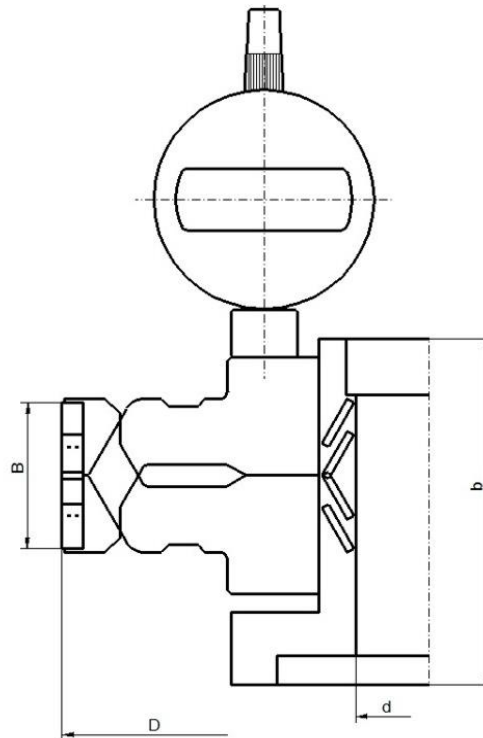


TECHNICAL FEATURES:

- 4 / 6 / 8 / 10 PCD cutting edges
- Positive & negative shear angle (symmetrical)
- Cutters hydraulically adjustable
- Micrometric regulation with Microtech System
- Opposite opening system
- Resharpenable cutter (max 8 times)

APPLICATION:

- For through feed machines
- For jointing and rabbeting:
 - Particleboards
 - MDF boards
 - Laminates
 - HPL and veneered panels



D	B	Z	n. max	Code (LH)	Code (RH)
150	20-30	4+4+4+4	12.000	DMA01S	DMA01D
150	20-30	6+6+6+6	12.000	DMA02S	DMA02D
150	30-40	4+4+4+4	12.000	DMA03S	DMA03D
150	30-40	6+6+6+6	12.000	DMA04S	DMA04D
150	36-46	4+4+4+4	12.000	DMA05S	DMA05D
150	36-46	6+6+6+6	12.000	DMA06S	DMA06D
200	20-30	4+4+4+4	10.000	DMA07S	DMA07D
200	20-30	6+6+6+6	10.000	DMA08S	DMA08D
200	20-30	8+8+8+8	10.000	DMA09S	DMA09D
200	20-30	10+10+10+10	10.000	DMA10S	DMA10D
200	30-40	4+4+4+4	10.000	DMA15S	DMA15D
200	30-40	6+6+6+6	10.000	DMA16S	DMA16D
200	30-40	8+8+8+8	10.000	DMA17S	DMA17D
200	30-40	10+10+10+10	10.000	DMA18S	DMA18D
200	36-46	4+4+4+4	10.000	DMA23S	DMA23D
200	36-46	6+6+6+6	10.000	DMA24S	DMA24D
200	36-46	8+8+8+8	10.000	DMA25S	DMA25D
220	20-30	4+4+4+4	10.000	DMA29S	DMA29D
220	20-30	6+6+6+6	10.000	DMA30S	DMA30D
220	20-30	8+8+8+8	10.000	DMA31S	DMA31D
220	20-30	10+10+10+10	10.000	DMA32S	DMA32D
220	30-40	4+4+4+4	10.000	DMA37S	DMA37D
220	30-40	6+6+6+6	10.000	DMA38S	DMA38D
220	30-40	8+8+8+8	10.000	DMA39S	DMA39D
220	30-40	10+10+10+10	10.000	DMA40S	DMA40D
220	36-46	4+4+4+4	10.000	DMA45S	DMA45D
220	36-46	6+6+6+6	10.000	DMA46S	DMA46D
220	36-46	8+8+8+8	10.000	DMA47S	DMA47D

Components to be ordered together with DMA at the first order (1+2+3+4+5) :

	Code (RH)
1) Hydraulic sleeve for spindle size Ø30+DKN	KS-30/60-95
1) Hydraulic sleeve for spindle size Ø35+DKN	CEI-35/60-95
1) Hydraulic sleeve for spindle size Ø40+DKN	KS-40/60-95
1) Hydraulic sleeve for spindle size Ø40 with Perske hexagon	EIS-40/60-99
2) Safety ring for Hydraulic sleeve KS-30/60-95	AA113
2) Safety ring for Hydraulic sleeve CEI-35/60-95	AA116
2) Safety ring for Hydraulic sleeve KS-40/60-95	AA127
2) Safety ring for Hydraulic sleeve EIS-40/60-99	AA126
3) Digital dial gauge	COM001
4) Long extension for dial gauge	PCOM020
5) Adaptor for dial gauge	AA114

Spare parts :

Micrometric adjustment screw (RH)	AA111
Micrometric adjustment screw (LH)	AA112
Positioner for dial gauge adaptor	POS006015
T-wrench for indexing cutters	CHE96T060

Note

The DMA-Hydrofix can be ordered only if vertical toupie engine have the following features:

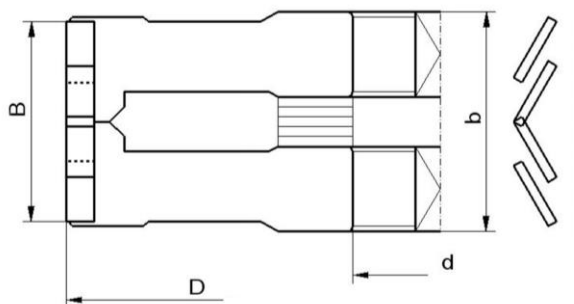
- machine shaft is > or = dimension (b)
- if Perske engine has diameter 40 mm
- if the engine can bear 10 kg

DSA (Z4-Z6-Z8-Z10)



TECHNICAL FEATURES:

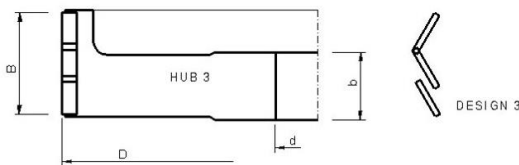
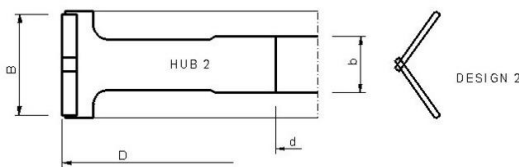
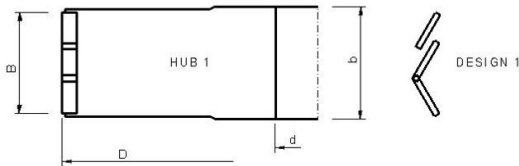
- 4 / 6 / 8 /10 PCD cutting edges
- Symmetrical design for LH & RH rotation
- Cutters adjustable with spacers
- Economy and performance
- Resharpenable cutter (max 8 times)



D	B	b	d	d	DKN	n. max	Code
80	20/30	24/34	30	3+3+3+3	8x4	23.000	DSA63
80	30/40	34/44	30	4+4+4+4	8x4	23.000	DSA64
100	20/30	24/34	30	3+3+3+3	8x4	18.000	DSA65
100	20/30	24/34	30	4+4+4+4	8x4	18.000	DSA66
100	30/40	34/44	30	3+3+3+3	8x4	18.000	DSA67
100	30/40	34/44	30	4+4+4+4	8x4	18.000	DSA68
125	20/30	24/34	30	4+4+4+4	8x4	15.000	DSA69
125	20/30	24/34	30	6+6+6+6	8x4	15.000	DSA70
125	30/40	34/44	30	4+4+4+4	8x4	15.000	DSA71
125	30/40	34/44	30	6+6+6+6	8x4	15.000	DSA72
125	36/46	40/50	30	4+4+4+4	8x4	15.000	DSA73
125	36/46	40/50	30	6+6+6+6	8x4	15.000	DSA74
150	20/30	24/34	30	4+4+4+4	8x4	12.000	DSA01
150	20/30	24/34	30	6+6+6+6	8x4	12.000	DSA02
150	30/40	34/44	30	4+4+4+4	8x4	12.000	DSA03
150	30/40	34/44	30	6+6+6+6	8x4	12.000	DSA04
150	36/46	40/50	30	4+4+4+4	8x4	12.000	DSA05
150	36/46	40/50	30	6+6+6+6	8x4	12.000	DSA06
180	20/30	24/34	35	4+4+4+4	8x4	10.000	DSA75
180	20/30	24/34	35	6+6+6+6	8x4	10.000	DSA76
180	20/30	24/34	35	8+8+8+8	8x4	10.000	DSA77
180	30/40	34/44	35	4+4+4+4	8x4	10.000	DSA78
180	30/40	34/44	35	6+6+6+6	8x4	10.000	DSA79
180	30/40	34/44	35	8+8+8+8	8x4	10.000	DSA80
180	36/46	40/50	35	4+4+4+4	8x4	10.000	DSA81
180	36/46	40/50	35	6+6+6+6	8x4	10.000	DSA82
180	36/46	40/50	35	8+8+8+8	8x4	10.000	DSA83
180	20/30	24/34	40	4+4+4+4	8x4	10.000	DSA84
180	20/30	24/34	40	6+6+6+6	8x4	10.000	DSA85
180	20/30	24/34	40	8+8+8+8	8x4	10.000	DSA86
180	30/40	34/44	40	4+4+4+4	8x4	10.000	DSA87
180	30/40	34/44	40	6+6+6+6	8x4	10.000	DSA88
180	30/40	34/44	40	8+8+8+8	8x4	10.000	DSA89
180	36/46	40/50	40	4+4+4+4	8x4	10.000	DSA90
180	36/46	40/50	40	6+6+6+6	8x4	10.000	DSA91
180	36/46	40/50	40	8+8+8+8	8x4	10.000	DSA92

D	B	b	d	d	DKN	n. max	Code
200	20/30	24/34	35	4+4+4+4	8x4	9.000	DSA07
200	20/30	24/34	35	6+6+6+6	8x4	9.000	DSA08
200	20/30	24/34	35	8+8+8+8	8x4	9.000	DSA09
200	20/30	24/34	35	10+10+10+10	8x4	9.000	DSA10
200	30/40	34/44	35	4+4+4+4	8x4	9.000	DSA15
200	30/40	34/44	35	6+6+6+6	8x4	9.000	DSA16
200	30/40	34/44	35	8+8+8+8	8x4	9.000	DSA17
200	30/40	34/44	35	10+10+10+10	8x4	9.000	DSA18
200	36/46	40/50	35	4+4+4+4	8x4	9.000	DSA23
200	36/46	40/50	35	6+6+6+6	8x4	9.000	DSA24
200	36/46	40/50	35	8+8+8+8	8x4	9.000	DSA25
200	20/30	24/34	40	4+4+4+4	8x4	9.000	DSA11
200	20/30	24/34	40	6+6+6+6	8x4	9.000	DSA12
200	20/30	24/34	40	8+8+8+8	8x4	9.000	DSA13
200	20/30	24/34	40	10+10+10+10	8x4	9.000	DSA14
200	30/40	34/44	40	4+4+4+4	8x4	9.000	DSA19
200	30/40	34/44	40	6+6+6+6	8x4	9.000	DSA20
200	30/40	34/44	40	8+8+8+8	8x4	9.000	DSA21
200	30/40	34/44	40	10+10+10+10	8x4	9.000	DSA22
200	36/46	40/50	40	4+4+4+4	8x4	9.000	DSA26
200	36/46	40/50	40	6+6+6+6	8x4	9.000	DSA27
200	36/46	40/50	40	8+8+8+8	8x4	9.000	DSA28

DFA (Z2-Z3-Z4-Z6)



TECHNICAL FEATURES:

- 2 / 3 / 4 / 6 PCD cutting edges
- Symmetrical and asymmetrical designs
- "Easy Flow" gullets for directional chip removal
- Economy and performance
- Resharpenable cutter (max 8 times)

D	B	b	d (hub)	Z (design)	DKN	n. max	Machine	Code (LH)	Code (RH)
70	54	31	30 (2)	2+2 (1)	8x4	23.000	Holzher, SCM	DFA48S	DFA48D
80	30	53	30 (1)	3+3 (2)	8x4	23.000	Biesse	DFA51S	DFA51D
80	45	53	30 (1)	3+3 (2)	8x4	23.000	Biesse	DFA52S	DFA52D
80	65	53	30 (1)	3+3 (2)	8x4	23.000	Biesse	DFA53S	DFA53D
85	45	45	30 (1)	3+3 (1)	8x4	22.200	Ott	DFA38S	DFA38D
100	34	37,6	30 (1)	3+3 (1)	8x4	18.000	IMA, Brandt	DFA54S	DFA54D
100	45	75	30 (1)	3+3 (2)	8x4	18.000	Biesse	DFA55S	DFA55D
100	48	40,6	30 (3)	3+3 (1)	8x4	18.000	IMA, Brandt, SCM	DFA37S	DFA37D
100	48	25	30 (2)	2+2 (3)	8x4	18.000	Holzher, SCM	DFA39S	DFA39D
100	48	25	30 (2)	3+3 (3)	8x4	18.000	Holzher, SCM	DFA40S	DFA40D
100	63	25	30 (2)	2+2 (3)	8x4	18.000	Holzher, SCM	DFA41S	DFA41D
100	63	25	30 (2)	3+3 (3)	8x4	18.000	Holzher, SCM	DFA42S	DFA42D
100	63	40,6	30 (3)	3+3 (3)	8x4	18.000	Brandt	DFA43S	DFA43D
100	63	40,6	30 (2)	3+3 (3)	8x4	18.000	SCM	DFA44S	DFA44D
100	65	75	30 (1)	3+3 (2)	8x4	18.000	Biesse	DFA47S	DFA47D
125	34	37,6	30 (1)	3+3 (2)	8x4	15.000	Homag	DFA45S	DFA45D
125	34	34	30 (1)	3+3 (1)	8x4	15.000	IMA	DFA36S	DFA36D
125	43	40	30 (1)	3+3 (2)	8x4	15.000	Homag	DFA46S	DFA46D
125	43	40	30 (1)	3+3 (1)	8x4	15.000	IMA	DFA56S	DFA56D
125	44	47	30 (1)	3+3 (2)	8x4	18.000	Biesse	DFA57S	DFA57D
125	63	40	30 (2)	3+3 (2)	8x4	15.000	Homag	DFA58S	DFA58D
125	63	40	30 (3)	3+3 (3)	8x4	15.000	IMA	DFA59S	DFA59D
180	34	34	35 (1)	6+6 (1)	10x4	10.000	Homag, IMA	DFA60S	DFA60D
180	34	42	35 (1)	3+3 (1)	10x4	10.000	Homag, IMA	DFA61S	DFA61D
180	43	46	35 (1)	4+4 (1)	10x4	10.000	Homag, IMA	DFA62S	DFA62D
180	63	46	35 (3)	4+4 (1)	10x4	10.000	Homag, IMA	DFA63S	DFA63D
200	34	25	30 (2)	4+4 (1)	12x5	9.000	Biesse	DFA49S	DFA49D
200	34	25	30 (2)	6+6 (1)	12x5	9.000	Biesse	DFA50S	DFA50D

DBB (Z4-Z6)

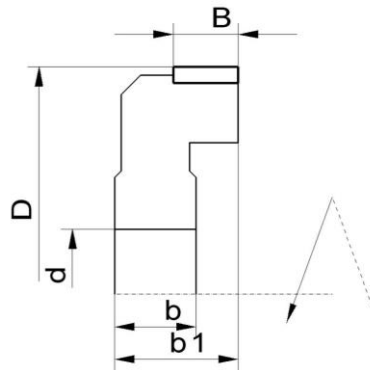


TECHNICAL FEATURES:

- Edge Jointing cutter
- 4 / 6 PCD cutting edges (2 mm tip height)
- Economy and Performance
- Polished diamond face
- Resharpenable cutter (max 1 time)

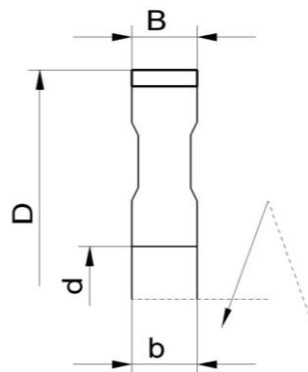
APPLICATION:

- For edge jointing and flush cutting of:
 - solid wood
 - veneer and plastic edge bands
- For Brandt, Homag, SCM, IDM, IMA edgebanding machines



D	B	b	b1	d	Z	DKN	Machine	Code (LH)	Code (RH)
70	10	12,5	19	20	4	6x3,5	Brandt, Homag, SCM, IDM, IMA	DBB01S	DBB01D
70	10	12,5	19	20	6	6x3,5	Brandt, Homag, SCM, IDM, IMA	DBB02S	DBB02D

DBA (Z4-Z6)



D	B	b	d	Z	DKN	Machine	Code (LH)	Code (RH)
70	10	10	16	4	5x2,3	Brandt, Homag	DBA01S	DBA01D
70	10	10	16	6	5x2,3	Brandt, Homag	DBA02S	DBA02D

DBH25F (Z4-Z6-Z8)



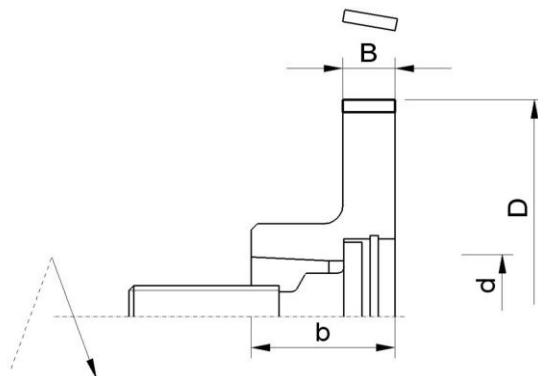
TECHNICAL FEATURES:

- Edge Jointing cutter with shear angle
- Machine interface: HSK 25R
- 4 / 6 / 8 DP cutting edges (2 mm tip height)
- 2 models available: Eco Vantage (DBH25F0_) or with "Easy-Flow" gullets for directional chip removal (DBH25F1_)
- Polished diamond face
- Resharpenable cutter (max 1 time)

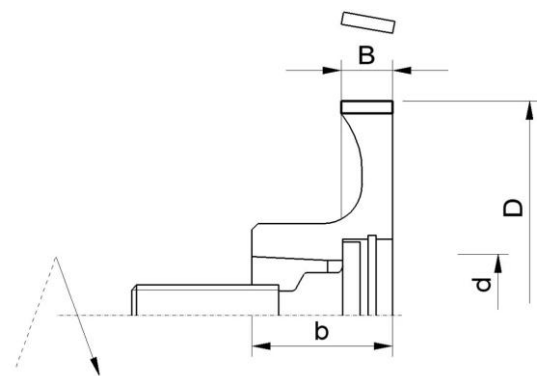
APPLICATION:

- For flush cutting and chamfering of:
 - solid wood
 - veneer and plastic edge bands
- For Homag & IMA edgebanding machines

(DBH25F0_)



(DBH25F1_)



D	B	b	d	Z	Machine	Code (LH)	Code (RH)
70	8	23	HSK 25R	4	Homag - IMA	DBH25F01S	DBH25F01D
70	15	23	HSK 25R	4	Homag - IMA	DBH25F02S	DBH25F02D
70	8	23	HSK 25R	6	Homag - IMA	DBH25F03S	DBH25F03D
70	15	23	HSK 25R	6	Homag - IMA	DBH25F04S	DBH25F04D
70	8,5	22,2	HSK 25R	4	Homag - IMA	DBH25F11S	DBH25F11D
70	8,5	22,2	HSK 25R	6	Homag - IMA	DBH25F12S	DBH25F12D
70	8,5	22,2	HSK 25R	8	Homag - IMA	DBH25F13S	DBH25F13D
70	15	23	HSK 25R	4	Homag - IMA	DBH25F14S	DBH25F14D
70	15	23	HSK 25R	6	Homag - IMA	DBH25F15S	DBH25F15D
70	8	23	HSK 25R	4	Homag - IMA	DBH25F16S	DBH25F16D
70	8	23	HSK 25R	6	Homag - IMA	DBH25F17S	DBH25F17D
70	8	23	HSK 25R	8	Homag - IMA	DBH25F18S	DBH25F18D

DBH25M (Z4-Z6)

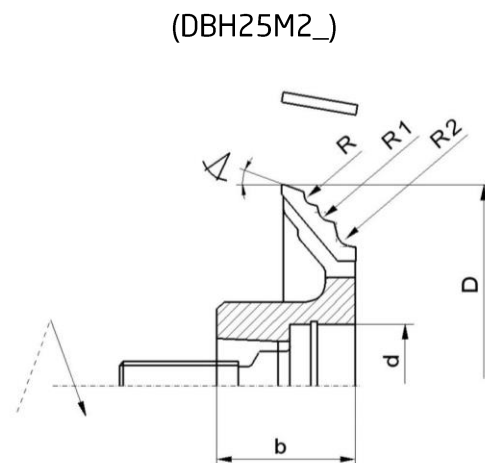
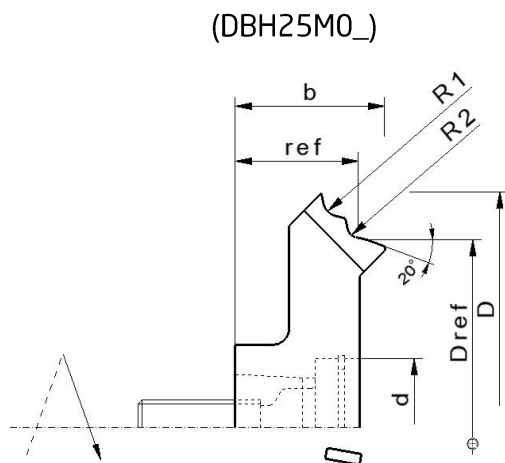


TECHNICAL FEATURES:

- Edge Rounding / Chamfering cutter with shear angle
- Machine interface: HSK 25R
- 4 / 6 PCD cutting edges (3 mm tip height)
- 2 models available: Eco Vantage (DBH25M0_) or with "Easy-Flow" gullets for directional chip removal (DBH25M2_)
- Polished diamond face
- Resharpenable cutter (max 1 time)

APPLICATION:

- For rounding and chamfering of:
 - solid wood
 - veneer and plastic edge bands
- For Homag edgebanding machines



R	R1	R2	chamfer	D	D ref	ref	b	d	Z	Code (LH)	Code (RH)
-	3	2	20	85	69	22,75	28	HSK 25R	4	DBH25M01S	DBH25M01D
3	2	-	20	81,1	-	-	28	HSK 25R	4	DBH25M21S	DBH25M21D
3	2	-	20	81,1	-	-	28	HSK 25R	6	DBH25M22S	DBH25M22D
1,5	2	3	20	81,1	-	-	28	HSK 25R	4	DBH25M23S	DBH25M23D
1,5	2	3	20	81,1	-	-	28	HSK 25R	6	DBH25M24S	DBH25M24D

DBH25P (Z4-Z6)



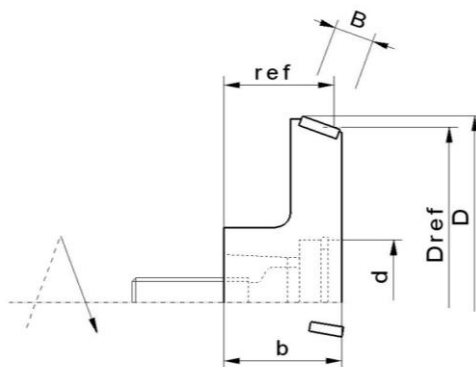
TECHNICAL FEATURES:

- Edge Chamfering cutter with shear angle
- Machine interface: HSK 25R
- 4 / 6 PCD cutting edges (2 & 3 mm tip height)
- 2 models available: Eco Vantage (DBH25P01) or with "Easy-Flow" gullets for directional chip removal (DBH25P1_)
- Polished diamond face
- Resharpenable cutter (max 1 time)

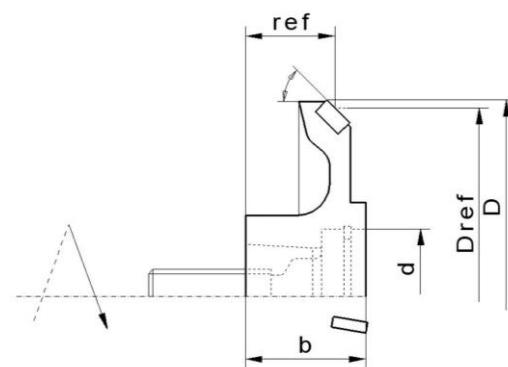
APPLICATION:

- For flush cutting and chamfering of:
 - solid wood
 - veneer and plastic edge bands
- For Homag & IMA edgebanding machines

(DBH25P01)



(DBH25P1_)



chamfer	D	D ref	ref	B	b	d	Z	Code (LH)	Code (RH)
20	73	70	21,5	8	23	HSK 25R	4	DBH25P01S	DBH25P01D
20	73	70	16,5	-	22,2	HSK 25R	4	DBH25P11S	DBH25P11D
45	73	70	16,5	-	22,2	HSK 25R	4	DBH25P12S	DBH25P12D
20	73	70	16,5	-	22,2	HSK 25R	6	DBH25P13S	DBH25P13D
45	73	70	16,5	-	22,2	HSK 25R	6	DBH25P14S	DBH25P14D

DBH25R (Z4-Z6)

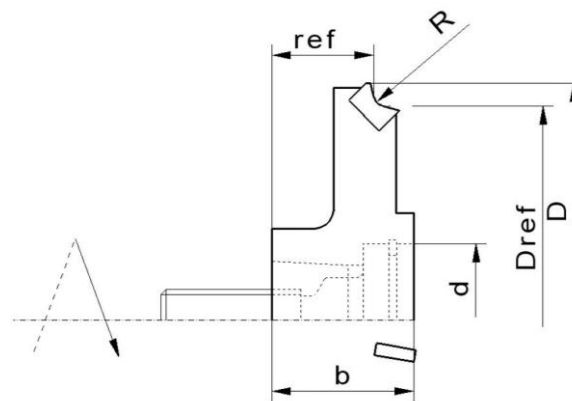


TECHNICAL FEATURES:

- Edge Rounding cutter with shear angle
- Machine interface: HSK 25R
- 4 / 6 PCD cutting edges (3 mm tip height)
- Economy and Performance
- Polished diamond face
- Resharpenable cutter (max 1 time)

APPLICATION:

- For rounding of:
 - solid wood
 - veneer and plastic edge bands
- For Homag & IMA edgebanding machines



R	D	D ref	ref	b	d	Z	Code (LH)	Code (RH)
1,0	75,1	70	16,5	23	HSK 25R	4	DBH25R01S	DBH25R01D
1,5	76,1	70	16,5	23	HSK 25R	4	DBH25R02S	DBH25R02D
2,0	77,5	70	16,5	23	HSK 25R	4	DBH25R03S	DBH25R03D
2,5	78,1	70	16,5	23	HSK 25R	4	DBH25R04S	DBH25R04D
3,0	78,8	70	16,5	23	HSK 25R	4	DBH25R05S	DBH25R05D
3,5	80,0	70	16,5	23	HSK 25R	4	DBH25R06S	DBH25R06D
4,0	81,2	70	16,5	23	HSK 25R	4	DBH25R07S	DBH25R07D
4,5	82,3	70	16,5	23	HSK 25R	4	DBH25R08S	DBH25R08D
5,0	83,3	70	16,5	23	HSK 25R	4	DBH25R09S	DBH25R09D
1,0	75,1	70	16,5	23	HSK 25R	6	DBH25R10S	DBH25R10D
1,5	76,1	70	16,5	23	HSK 25R	6	DBH25R11S	DBH25R11D
2,0	77,5	70	16,5	23	HSK 25R	6	DBH25R12S	DBH25R12D
2,5	78,1	70	16,5	23	HSK 25R	6	DBH25R13S	DBH25R13D
3,0	78,8	70	16,5	23	HSK 25R	6	DBH25R14S	DBH25R14D
3,5	80,0	70	16,5	23	HSK 25R	6	DBH25R15S	DBH25R15D
4,0	81,2	70	16,5	23	HSK 25R	6	DBH25R16S	DBH25R16D
4,5	82,3	70	16,5	23	HSK 25R	6	DBH25R17S	DBH25R17D
5,0	83,3	70	16,5	23	HSK 25R	6	DBH25R18S	DBH25R18D

DBH25R4 (Z4-Z6)

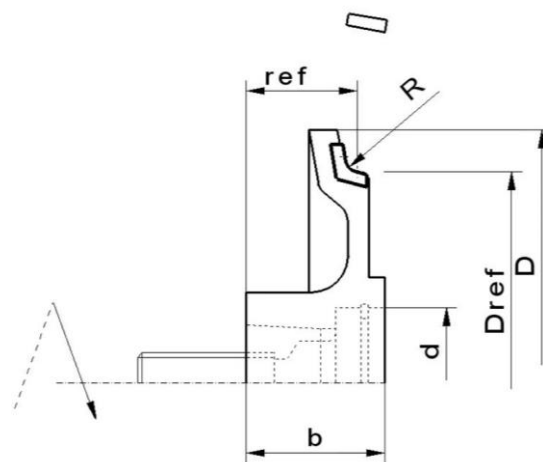


TECHNICAL FEATURES:

- Edge Rounding cutter with shear angle
- Machine interface: HSK 25R
- 4 / 6 PCD cutting edges (2 mm tip height)
- "Easy-Flow" gullets for directional chip removal
- Polished diamond face
- Resharpenable cutter (max 1 time)

APPLICATION:

- For rounding of:
 - solid wood
 - veneer and plastic edge bands
- For Homag edgebanding machines



R	D	D ref	ref	b	d	Z	Code (LH)	Code (RH)
1,0	84	70	17,5	23	HSK 25R	4	DBH25R41S	DBH25R41D
1,5	84	70	18,0	23	HSK 25R	4	DBH25R42S	DBH25R42D
2,0	84	70	18,5	23	HSK 25R	4	DBH25R43S	DBH25R43D
2,5	84	70	19,0	23	HSK 25R	4	DBH25R44S	DBH25R44D
3,0	84	70	19,5	23	HSK 25R	4	DBH25R45S	DBH25R45D
3,5	84	70	20,0	23	HSK 25R	4	DBH25R46S	DBH25R46D
4,0	84	70	20,5	23	HSK 25R	4	DBH25R47S	DBH25R47D
4,5	84	70	21,0	23	HSK 25R	4	DBH25R48S	DBH25R48D
5,0	84	70	21,5	23	HSK 25R	4	DBH25R49S	DBH25R49D
1,0	84	70	17,5	23	HSK 25R	6	DBH25R4AS	DBH25R4AD
1,5	84	70	18,0	23	HSK 25R	6	DBH25R4BS	DBH25R4BD
2,0	84	70	18,5	23	HSK 25R	6	DBH25R4CS	DBH25R4CD
2,5	84	70	19,0	23	HSK 25R	6	DBH25R4DS	DBH25R4DD
3,0	84	70	19,5	23	HSK 25R	6	DBH25R4ES	DBH25R4ED
3,5	84	70	20,0	23	HSK 25R	6	DBH25R4FS	DBH25R4FD
4,0	84	70	20,5	23	HSK 25R	6	DBH25R4GS	DBH25R4GD
4,5	84	70	21,0	23	HSK 25R	6	DBH25R4HS	DBH25R4HD
5,0	84	70	21,5	23	HSK 25R	6	DBH25R4IS	DBH25R4ID

DBH32P (Z4-Z6)



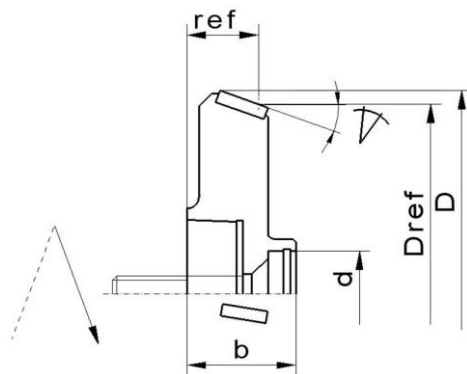
TECHNICAL FEATURES:

- Edge Chamfering cutter with shear angle
- Machine interface: HSK 32
- 4 / 6 PCD cutting edges (2 mm tip height)
- 2 models available: Eco Vantage (DBH32P0_) or with "Easy-Flow" gullets for directional chip removal (DBH32P2_)
- Polished diamond face
- Resharpenable cutter (max 1 time)

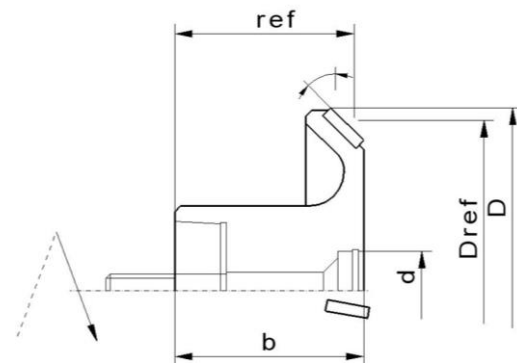
APPLICATION:

- For chamfering of:
 - solid wood
 - veneer and plastic edge bands
- For Homag aggregate FK edgebanding machines

(DBH32P0_)



(DBH32P2_)



chamfer	D	D ref	ref	b	d	Z	Code (LH)	Code (RH)
5	63,2	62	11,5	17,5	HSK 32	4	DBH32P01S	DBH32P01D
20	66,5	62	11,5	17,5	HSK 32	4	DBH32P02S	DBH32P02D
30	68,6	62	11,5	17,5	HSK 32	4	DBH32P03S	DBH32P03D
45	71,3	62	11,5	17,5	HSK 32	4	DBH32P04S	DBH32P04D
20	64,8	62	31,5	34,0	HSK 32	4	DBH32P21S	DBH32P21D
45	64,8	62	31,5	34,0	HSK 32	4	DBH32P22S	DBH32P22D
20	64,8	62	31,5	34,0	HSK 32	6	DBH32P23S	DBH32P23D
45	64,8	62	31,5	34,0	HSK 32	6	DBH32P24S	DBH32P24D

DBH32R (Z4-Z6)

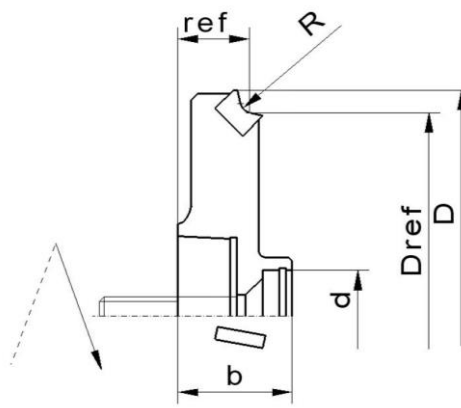


TECHNICAL FEATURES:

- Edge Rounding cutter with shear angle
- Machine interface: HSK 32
- 4 / 6 PCD cutting edges (3 mm tip height)
- Economy and Performance
- Polished diamond face
- Resharpenable cutter (max 1 time)

APPLICATION:

- For rounding of:
 - solid wood
 - veneer and plastic edge bands
- For Homag aggregate FK edgebanding machines



R	D	D ref	ref	b	d	Z	Code (LH)	Code (RH)
0,8	70	62	11,5	17,5	HSK 32	4	DBH32R01S	DBH32R01D
1,0	69	62	11,5	17,5	HSK 32	4	DBH32R02S	DBH32R02D
1,5	69	62	11,5	17,5	HSK 32	4	DBH32R03S	DBH32R03D
2,0	69	62	11,5	17,5	HSK 32	4	DBH32R04S	DBH32R04D
2,5	69	62	11,5	17,5	HSK 32	4	DBH32R05S	DBH32R05D
3,0	69	62	11,5	17,5	HSK 32	4	DBH32R06S	DBH32R06D
3,5	72	62	11,5	17,5	HSK 32	4	DBH32R07S	DBH32R07D
4,0	72	62	11,5	17,5	HSK 32	4	DBH32R08S	DBH32R08D
4,5	72	62	11,5	17,5	HSK 32	4	DBH32R09S	DBH32R09D
5,0	72	62	11,5	17,5	HSK 32	4	DBH32R10S	DBH32R10D
0,8	70	62	11,5	17,5	HSK 32	6	DBH32R11S	DBH32R11D
1,0	69	62	11,5	17,5	HSK 32	6	DBH32R12S	DBH32R12D
1,5	69	62	11,5	17,5	HSK 32	6	DBH32R13S	DBH32R13D
2,0	69	62	11,5	17,5	HSK 32	6	DBH32R14S	DBH32R14D
2,5	69	62	11,5	17,5	HSK 32	6	DBH32R15S	DBH32R15D
3,0	69	62	11,5	17,5	HSK 32	6	DBH32R16S	DBH32R16D
3,5	72	62	11,5	17,5	HSK 32	6	DBH32R17S	DBH32R17D
4,0	72	62	11,5	17,5	HSK 32	6	DBH32R18S	DBH32R18D
4,5	72	62	11,5	17,5	HSK 32	6	DBH32R19S	DBH32R19D
5,0	72	62	11,5	17,5	HSK 32	6	DBH32R20S	DBH32R20D

DBH32R4 (Z4-Z6)

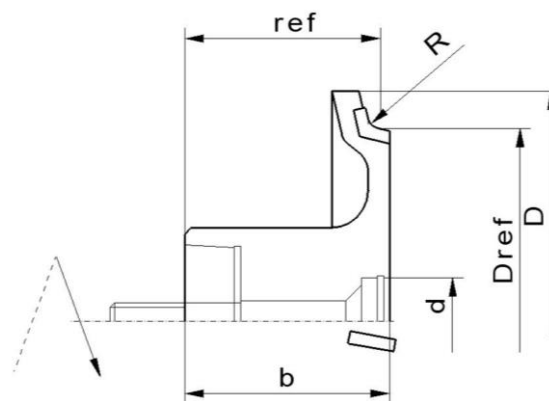


TECHNICAL FEATURES:

- Edge Rounding cutter with shear angle
- Machine interface: HSK 32
- 4 / 6 PCD cutting edges (3 mm tip height)
- Economy and Performance
- Polished diamond face
- Resharpenable cutter (max 1 time)

APPLICATION:

- For rounding of:
 - solid wood
 - veneer and plastic edge bands
- For Homag aggregate FK edgebanding machines



R	D	D ref	ref	b	d	Z	Code (LH)	Code (RH)
1,0	74	62	31,5	33	HSK 32	4	DBH32R41S	DBH32R41D
1,5	74	62	31,5	33	HSK 32	4	DBH32R42S	DBH32R42D
2,0	74	62	31,5	33	HSK 32	4	DBH32R43S	DBH32R43D
2,5	74	62	31,5	33	HSK 32	4	DBH32R44S	DBH32R44D
3,0	74	62	31,5	33	HSK 32	4	DBH32R45S	DBH32R45D
3,5	74	62	31,5	33	HSK 32	4	DBH32R46S	DBH32R46D
4,0	74	62	31,5	33	HSK 32	4	DBH32R47S	DBH32R47D
4,5	74	62	31,5	33	HSK 32	4	DBH32R48S	DBH32R48D
5,0	74	62	31,5	33	HSK 32	4	DBH32R49S	DBH32R49D
1,0	74	62	31,5	33	HSK 32	6	DBH32R4AS	DBH32R4AD
1,5	74	62	31,5	33	HSK 32	6	DBH32R4BS	DBH32R4BD
2,0	74	62	31,5	33	HSK 32	6	DBH32R4CS	DBH32R4CD
2,5	74	62	31,5	33	HSK 32	6	DBH32R4DS	DBH32R4DD
3,0	74	62	31,5	33	HSK 32	6	DBH32R4ES	DBH32R4ED
3,5	74	62	31,5	33	HSK 32	6	DBH32R4FS	DBH32R4FD
4,0	74	62	31,5	33	HSK 32	6	DBH32R4GS	DBH32R4GD
4,5	74	62	31,5	33	HSK 32	6	DBH32R4HS	DBH32R4HD
5,0	74	62	31,5	33	HSK 32	6	DBH32R4IS	DBH32R4ID

DBR01 (Z3-Z4-Z6)

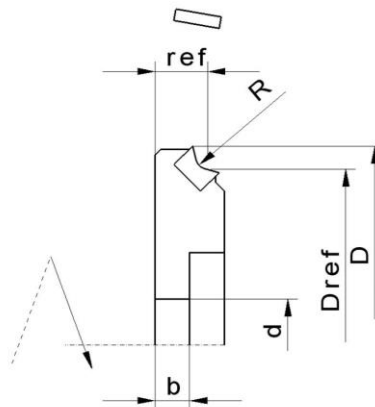
DP **RH** **LH**

TECHNICAL FEATURES:

- Edge Chamfering cutter with shear angle
- 3 / 4 / 6 PCD cutting edges (3 mm tip height)
- Economy and Performance
- Polished diamond face
- Resharpenable cutter (max 1time)

APPLICATION:

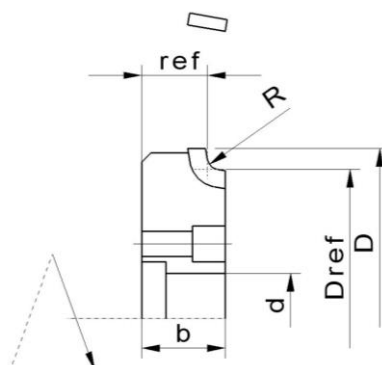
- For rounding of:
 - solid wood
 - veneer and plastic edge bands
- For Homag, Brandt, Ott edgebanding machines



R	D	D ref	ref	b	d	Z	DKN	Code (LH)	Code (RH)
2	69	61	9,1	12	16	4	5x2,3	DBR01S	DBR01D
3	69	61	9,1	12	16	4	5x2,3	DBR02S	DBR02D
2	69	61	9,1	12	16	6	5x2,3	DBR03S	DBR03D
3	69	61	9,1	12	16	6	5x2,3	DBR04S	DBR04D

DBR00 (Z3-Z4-Z6)

DP **RH** **LH**



R	D	D ref	ref	b	d	Z	NL	Code (LH)	Code (RH)
2	57	50	11	14	15	3	3/4,2/25	DBR005S	DBR005D
3	57	50	11	14	15	3	3/4,2/25	DBR006S	DBR006D

DBR (Z3-Z4)

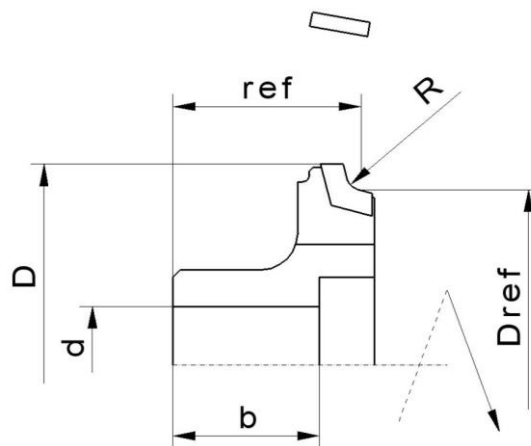


TECHNICAL FEATURES:

- Edge Rounding cutter with shear angle
- 3 / 4 DP cutting edges (3 mm tip height)
- • "Easy-Flow" gullets for directional chip removal
- Polished diamond face
- Resharpenable cutter (max 1time)

APPLICATION:

- For rounding of:
 - solid wood
 - veneer and plastic edge bands
- For Stefani with ED system and aggregate Round/K edgebanding machines



R	D	D ref	ref	b	d	Z	DKN	Code (LH)	Code (RH)
1,0	55,7	49,90	25,7	20	16	3	5x2,3	DBR00BS	DBR00BD
1,5	55,7	50,90	25,7	20	16	3	5x2,3	DBR00CS	DBR00CD
2,0	55,7	51,90	25,7	20	16	3	5x2,3	DBR00DS	DBR00DD
2,5	55,7	52,90	25,7	20	16	3	5x2,3	DBR00ES	DBR00ED
3,0	55,7	53,90	25,7	20	16	3	5x2,3	DBR00FS	DBR00FD
1,0	54,0	49,93	25,7	20	16	4	5x2,3	DBR00GS	DBR00GD
1,5	54,5	50,93	25,7	20	16	4	5x2,3	DBR00HS	DBR00HD
2,0	55,3	51,93	25,7	20	16	4	5x2,3	DBR00IS	DBR00ID
2,5	55,7	52,93	25,7	20	16	4	5x2,3	DBR00JS	DBR00JD
3,0	55,7	53,93	25,7	20	16	4	5x2,3	DBR00KS	DBR00KD

R-MAX 5.1 (Z28+4)



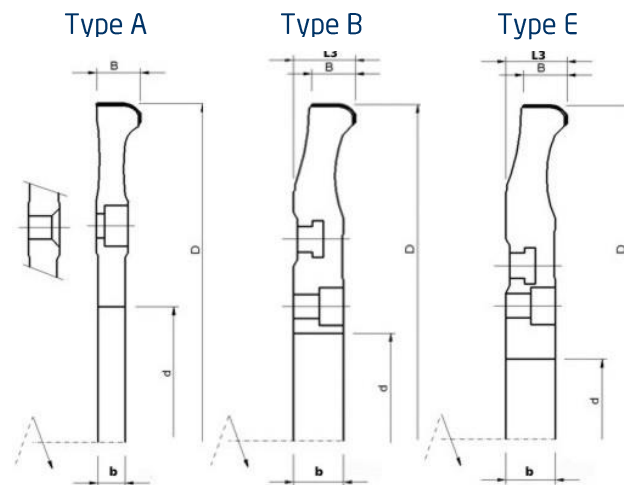
TECHNICAL FEATURES:

- Radius hogger with negative hook
- Feed speed: up to 50 mt/min
- 28+4 PCD cutting edges
- "Easy-Flow" gullets for directional chip removal
- Resharpenable hogger (max 12 times)



APPLICATION:

- For 2nd machine for processing of:
 - Particleboards
 - MDF boards
- For double hogger systems



D	B	b	d	L3	Z	feed DZ	type	Code (RH)	Code (LH)
220	15	10	100	-	28+4	30 - 50	A	DR285A02D	DR285A02S
250	15	10	100	-	28+4	30 - 50	A	DR285A03D	DR285A03S
250	15	18,5	80	23	28+4	30 - 50	B	DR285B02D	DR285B02S
250	15	18,5	60	23	28+4	30 - 50	E	DR285E02D	DR285E02S

R-MAX (Z28+4 / Z40+4)

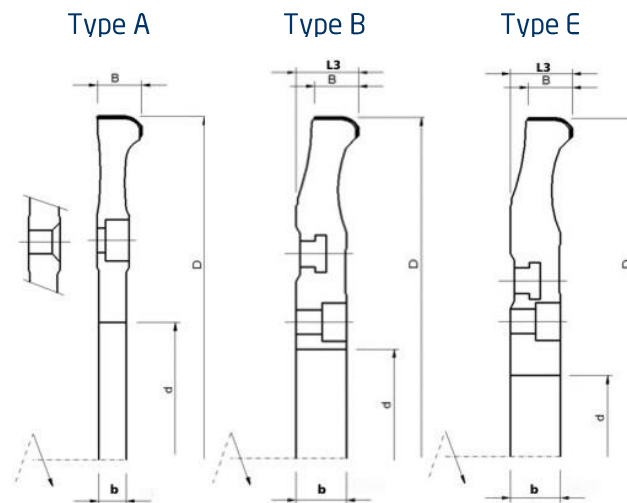


TECHNICAL FEATURES:

- Radius hogger with negative hook
- Feed speed: up to 50 mt/min
- 28+4 / 40+4 PCD cutting edges
- "Easy-Flow" gullets for directional chip removal
- Resharpenable hogger (max 12 times)

APPLICATION:

- For 1st machine of squaring and automatic squaring edge-banding machines for:
 - Particleboards
 - MDF boards
 - Laminates
 - HPL and veneered panels
- For double hogger systems



D	B	b	d	L3	Z	feed DZ	type	Code (RH)	Code (LH)
220	15	10	100	-	28+4	30 - 50	A	DR289A02D	DR289A02S
250	15	10	100	-	28+4	30 - 50	A	DR289A03D	DR289A03S
250	15	10	100	-	40+4	60 - 100	A	DR409A03D	DR409A03S
220	15	18,5	80	23	28+4	30 - 50	B	DR289B01D	DR289B01S
250	15	18,5	80	23	28+4	30 - 50	B	DR289B02D	DR289B02S
250	15	18,5	80	23	40+4	60 - 100	B	DR409B02D	DR409B02S
250	15	18,5	60	23	28+4	30 - 50	E	DR289E02D	DR289E02S
250	15	18,5	60	23	40+4	60 - 100	E	DR409E02D	DR409E02S

DCG704 (Z2 - V2)

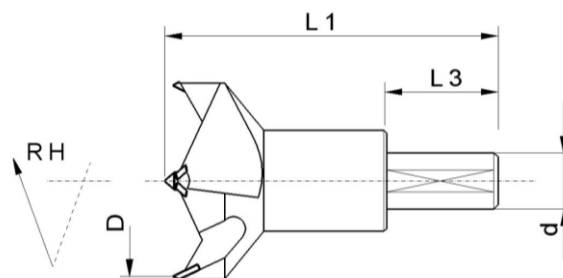


TECHNICAL FEATURES:

- 2 PCD precision rakers
- 2 PCD negative spurs
- HW head with precision balanced centering point
- Parallel shank with driving flat and length adjusting screw
- Super strenght steel body
- Total length: 70,0 mm

APPLICATION:

- For CNC centers, hardware hinge and automatic boring machines
- For drilling of hinge hardware holes in:
 - Particleboards
 - MDF boards
 - Laminates
 - HPL and veneered panels
 - Solid hard woods



D	L1	d	L3	Z	V	n. max	Code (LH)	Code (RH)
15	70	10	26	2	2	28.000	DCG7041S	DCG7041D
16	70	10	26	2	2	27.000	DCG7042S	DCG7042D
18	70	10	26	2	2	25.000	DCG7043S	DCG7043D
20	70	10	26	2	2	24.000	DCG7044S	DCG7044D
22	70	10	26	2	2	23.000	DCG7045S	DCG7045D
25	70	10	26	2	2	21.500	DCG7047S	DCG7047D
26	70	10	26	2	2	21.000	DCG7048S	DCG7048D
30	70	10	26	2	2	19.500	DCG704AS	DCG704AD
35	70	10	26	2	2	18.500	DCG704CS	DCG704CD
40	70	10	26	2	2	17.000	DCG704ES	DCG704ED

DCG574 (Z2 - V2)

DP RH LH

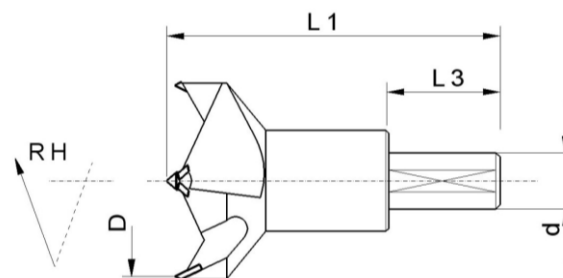


TECHNICAL FEATURES:

- 2 PCD precision rakers
- 2 PCD negative spurs
- HW head with precision balanced centering point
- Parallel shank with driving flat and length adjusting screw
- Super strenght steel body
- Total length: 57,5 mm

APPLICATION:

- For CNC centers, hardware hinge and automatic boring machines
- For drilling of hinge hardware holes in:
 - Particleboards
 - MDF boards
 - Laminates
 - HPL and veneered panels
 - Solid hard woods



D	L1	d	L3	Z	V	n. max	Code (LH)	Code (RH)
15	57,5	10	26	2	2	28.000	DCG5741S	DCG5741D
16	57,5	10	26	2	2	27.000	DCG5742S	DCG5742D
18	57,5	10	26	2	2	25.000	DCG5743S	DCG5743D
20	57,5	10	26	2	2	24.000	DCG5744S	DCG5744D
22	57,5	10	26	2	2	23.000	DCG5745S	DCG5745D
25	57,5	10	26	2	2	21.500	DCG5747S	DCG5747D
26	57,5	10	26	2	2	21.000	DCG5748S	DCG5748D
30	57,5	10	26	2	2	19.500	DCG574AS	DCG574AD
35	57,5	10	26	2	2	18.500	DCG574CS	DCG574CD
40	57,5	10	26	2	2	17.000	DCG574ES	DCG574ED

DL (Z30-Z120)

DP

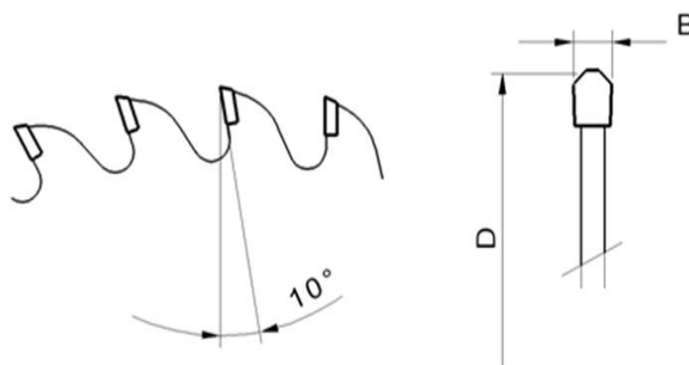


TECHNICAL FEATURES:

- Sizing circular saw blade
- Up to 120 PCD cutting edges (5,7 mm tip height)
- Hook angle: 10°
- 5 different tooth configurations
- Low noise and no vibration due to dampened body
- Economy and Performance
- Resharpenable saw blade (max 8 time)

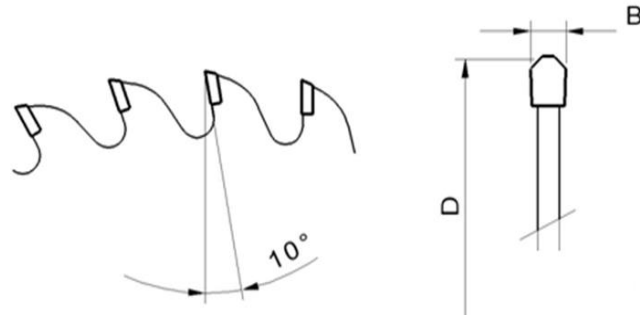
APPLICATION:

- For sizing cuts in:
 - particleboard and MDF
 - paper-, HPL- and foil-laminates
 - hard fibre panels
 - real wood veneers and plyboard
- Tooth configuration:
 - model **DL**: TR/TR
 - model **DLQ**: FZ/TR/FA
 - model **DLB**: FZ/FA
 - model **DLO**: WZ/FA
 - model **DLP**: FZ/TR



D	Z \ B		3,1-3,5	3,6-4,0	4,1-4,5	4,6-5,0	5,1-5,5
	Z	B					
200-300	30						
200-300	32						
200-300	36						
200-300	42						
200-300	48						
200-300	54						
200-300	60						
200-300	72						
200-300	80						

For the article code see page 36

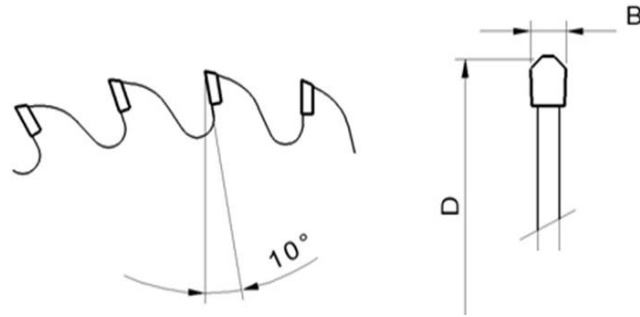


D	Z \ B		3,1-3,5	3,6-4,0	4,1-4,5	4,6-5,0	5,1-5,5
	Z	B					
251-300		84					
251-300		90					
251-300		92					
251-300		96					

D	Z \ B		3,1-3,5	3,6-4,0	4,1-4,5	4,6-5,0	5,1-5,5
	Z	B					
301-400		42					
301-400		48					
301-400		54					
301-400		60					
301-400		72					
301-400		80					
301-400		84					
301-400		90					
301-400		92					
301-400		96					
301-400		102					
301-400		108					

D	Z \ B		3,6-4,0	4,1-4,5	4,6-5,0	5,1-5,5	5,6-6,0
	Z	B					
401-500		42					
401-500		48					
401-500		54					
401-500		60					
401-500		72					
401-500		80					
401-500		84					
401-500		90					
401-500		92					
401-500		96					
401-500		102					
401-500		108					
401-500		120					

For the article code see page 36



D	Z \ B		4,1-4,5	4,6-5,0	5,1-5,5	5,6-6,0	6,1-6,5
	Z	B					
501-600		48					
501-600		54					
501-600		60					
501-600		72					
501-600		80					
501-600		84					
501-600		90					
501-600		92					
501-600		96					
501-600		102					
501-600		108					
501-600		120					

D	Z \ B		5,1-5,5	5,6-6,0	6,1-6,5	6,6-7,0
	Z	B				
601-700		48				
601-700		54				
601-700		60				
601-700		72				
601-700		80				
601-700		84				
601-700		90				
601-700		92				
601-700		96				
601-700		102				
601-700		108				
601-700		120				

Article code:

The code to order is composed by: Model - D - Z - B

For example, if you want to order model DLB with D=210, Z=54, B=3.3 → art. code: **DLB-210-54-33**

DIT (Z12-Z50)

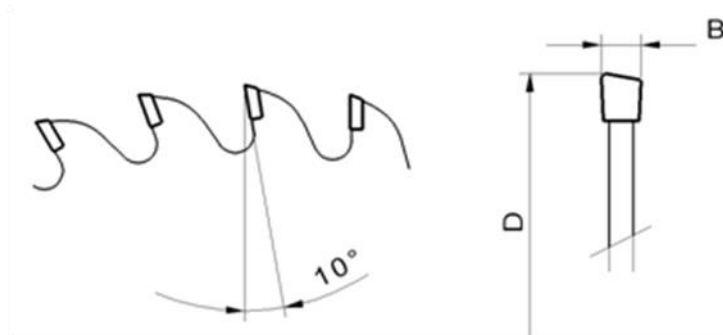
DP

TECHNICAL FEATURES:

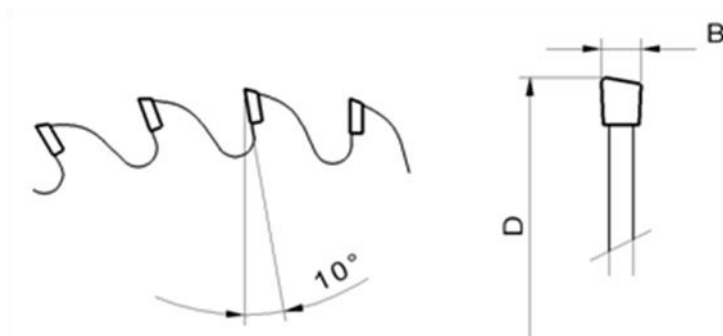
- Scoring saw blade: top bevel "ES"
- Up to 50 PCD cutting edges (5,7 mm tip height)
- Hook angle: 10°
- Economy and Performance
- Low noise and no vibration due to dampened body
- Resharpenable saw blade (max 8 times)

APPLICATION:

- For scoring of:
 - particleboard and MDF
 - paper-, HPL- and foil-laminates
 - hard fibre panels
 - real wood veneers and plyboard
- Tooth configuration:
 - "ES/DX/FA" (right-hand rotation)
 - "ES/SX/FA" (left-hand rotation)



D	Z \ B		3,1-3,5	3,6-4,0	4,1-4,5	4,6-5,0	5,1-5,5	5,6-6,0	6,1-6,5
	Z	B							
100-200	12								
100-200	16								
100-200	18								
100-200	20								
100-200	24								
100-200	28								
100-200	30								
100-200	32								
100-200	36								



D	Z \ B		3,1-3,5	3,6-4,0	4,1-4,5	4,6-5,0	5,1-5,5	5,6-6,0	6,1-6,5
	Z	B							
151-200	40								
151-200	42								
151-200	48								
151-200	50								

DIS (Z16-Z36)

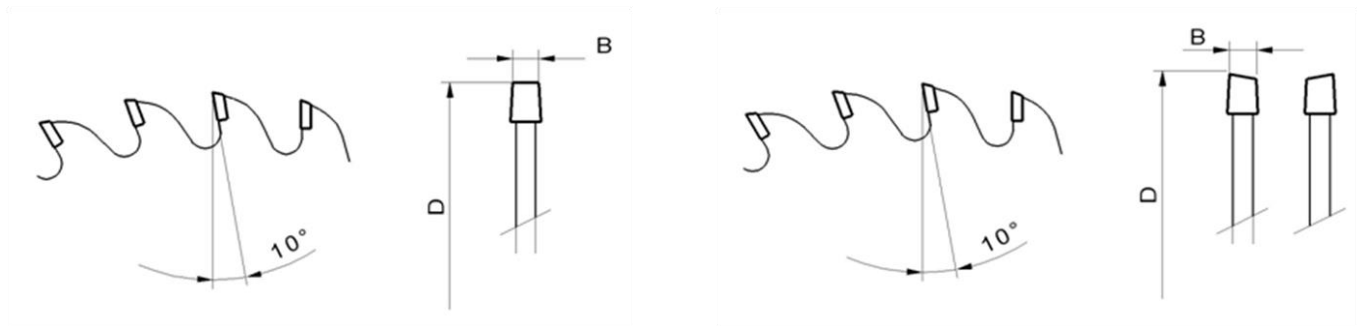
DP

TECHNICAL FEATURES:

- Scoring saw blade: conical top bevel "KON"
- Up to 36 PCD cutting edges (5,7 mm tip height)
- Hook angle: 10°
- 2 different tooth configurations
- Economy and Performance
- Low noise and no vibration due to dampened body
- Resharpenable saw blade (max 8 times)

APPLICATION:

- For scoring of:
 - particleboard and MDF
 - paper-, HPL- and foil-laminates
 - hard fibre panels
 - real wood veneers and plyboard
- Tooth configuration:
 - model **DIS**: conical-flat "KON-FZ"
 - model **DIST**: conical-alternate "KON-WZ"



D	Z \ B	3,1-4,1	4,3-5,3	4,7-5,7	4,9-5,9	5,1-6,1	5,7-6,7	6,0-7,0	6,3-7,3
100-250	16								
100-250	20								
100-250	24								
100-250	30								
100-250	36								

D	Z \ B	3,1-4,1	4,3-5,3	4,7-5,7	4,9-5,9	5,1-6,1	5,7-6,7	6,0-7,0	6,3-7,3
251-300	16								
251-300	20								
251-300	24								
251-300	30								
251-300	36								

Article code:

The code to order is composed by: Model - D - Z - B with S (for LH) or D (for RH), where available

For example, if you want to order D=110, Z=30, B=3,7 with right-hand rotation → art. code: **DIT-110-30-37D**